



GAT MONTHLY MEMBERSHIP PROGRESS REPORT

Results as of: 3/31/2023

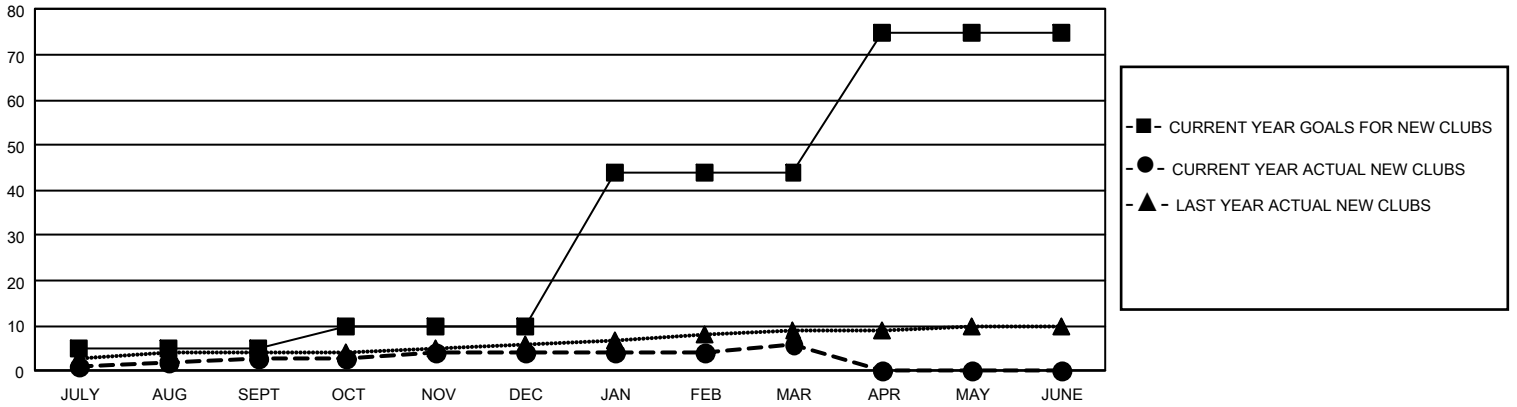
GMT Constitutional Area 5 - K, Group M

REPORT DOES NOT INCLUDE CLUBS IN UNDISTRICTED AREAS.

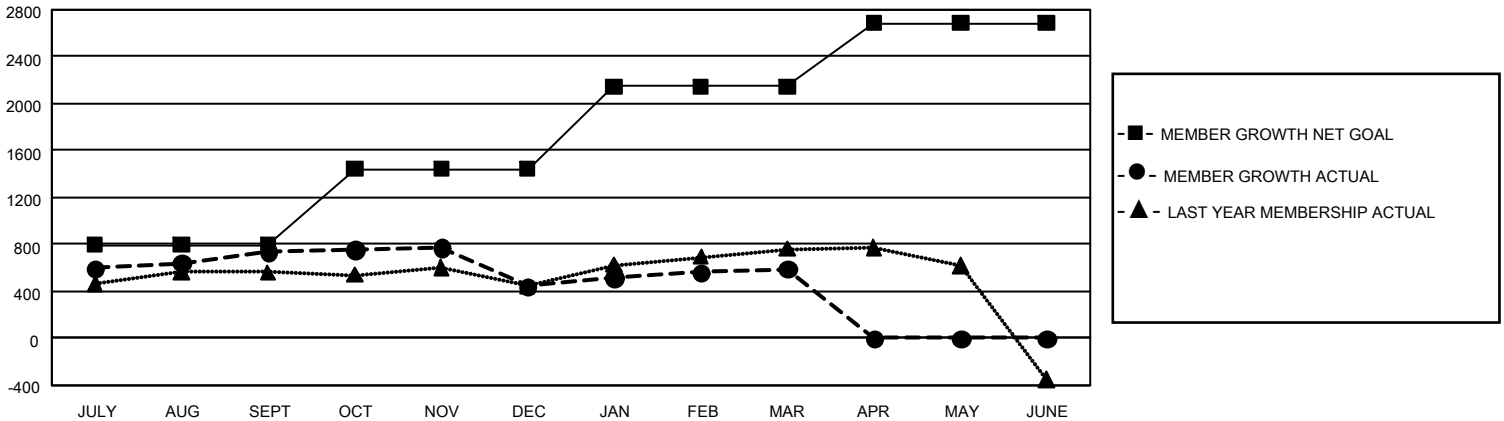
Clubs			
RESULTS FOR 2022-2023			
QUARTER	NEW CLUB GOAL	NEW CLUBS	DROPPED CLUBS
JULY/AUG/SEPT	15	3	2
OCT/NOV/DEC	15	1	1
JAN/FEB/MAR	102	2	1
APR/MAY/JUNE	93	0	0

Members			
RESULTS FOR 2022-2023			
QUARTER	MEMBER GROWTH NET GOAL	MEMBER GROWTH ACTUAL	DROPPED MEMBERS ACTUAL (including transfers)
JULY/AUG/SEPT	795	1,439	641
OCT/NOV/DEC	650	497	780
JAN/FEB/MAR	703	509	332
APR/MAY/JUNE	538	0	0

GOALS AND ACTUAL NEW CLUBS CUMULATIVE



GOALS AND ACTUAL MEMBERS CUMULATIVE



DROPPED CLUBS: 4	455 CLUBS OF 608 ADDED 1 OR MORE NEW MEMBERS	<u>GENDER DISTRIBUTION</u>	
<u>DROPPED MEMBERS</u>		MALE	18,206 (79.82%)
DECEASED	65	FEMALE	4,604 (20.18%)
CLUB CANCELLED	0	NON BINARY	0 (0.00%)
OTHER	1,688	PREFER NOT TO ANSWER	0 (0.00%)
TOTAL	1,753	TOTAL FAMILY UNIT MEMBERS	778
	CLICK HERE FOR CUMULATIVE MEMBERSHIP DATA	FAMILY MEMBERS PAYING HALF DUES	443